

This drawing is the property of K-RIDE and must not be passed on to any person or body not authorised by us to receive it nor be copied or otherwise made use either in full or in part by such person or body without our prior permission in writing.

- NOTES-
1. ALL DIMENSIONS ARE IN METER UNLESS OTHERWISE STATED.
 2. DRAIN / RETAINING WALL DETAILS SHALL BE SUBMITTED SEPARATELY.
 3. SCHEDULE OF DIMENSIONS FOLLOWED AS PER BSPP.
 4. P-WAY DESIGN DETAILS ARE NOT PART OF THIS PACKAGE SCOPE.
 5. THE RUB/ROB/BRIDGES/STRUCTURE SHOWN IN THE DRAWING SHALL BE REFERRED TO RESPECTIVE GAD'S FOR DETAILS.
 6. DESIGN SLOPES SHALL BE AS PER THE APPROVED DESIGN REPORT.
 7. IR DOUBLING SHOWN IN PLAN IS AS PER CLIENTS TENDER STATGE AND NOT FINAL.

LEGEND FOR PLAN:

PROPOSED BSPP TRACK	
FUTURE BSPP WORK	
EXISTING IR TRACK	
FUTURE IR WORK	
EXISTING IR ROW	
PROPOSED BSPP ROW (LAQ)	

LEGEND FOR PROFILE:

PROPOSED BSPP FORMATION LEVEL	
PROPOSED BSPP RAIL LEVEL	
EXISTING IR RAIL LEVEL	
GROUND LEVEL	

ALIGNMENT NOTATIONS:

R = RADIUS
 CL = CIRCULAR CURVE LENGTH
 TRL = TRANSITION LENGTH
 TTL = TANGENT LENGTH
 Ca = ACTUAL CANT
 Cd = CANT DEFICIENT
 Cg = CANT GRADIENT

G = GRADIENT
 L = GRADIENT LENGTH
 TTC1 = SPIRAL TO CURVE
 TTC2 = CURVE TO SPIRAL
 TTC3 = SPIRAL TO TANGENT

PROJECT:
 BENGALURU SUBURBAN RAILWAY PROJECT (BSPP) - CORRIDOR - 4

EMPLOYER:
 RAIL INFRASTRUCTURE DEVELOPMENT COMPANY (KARNATAKA) LIMITED

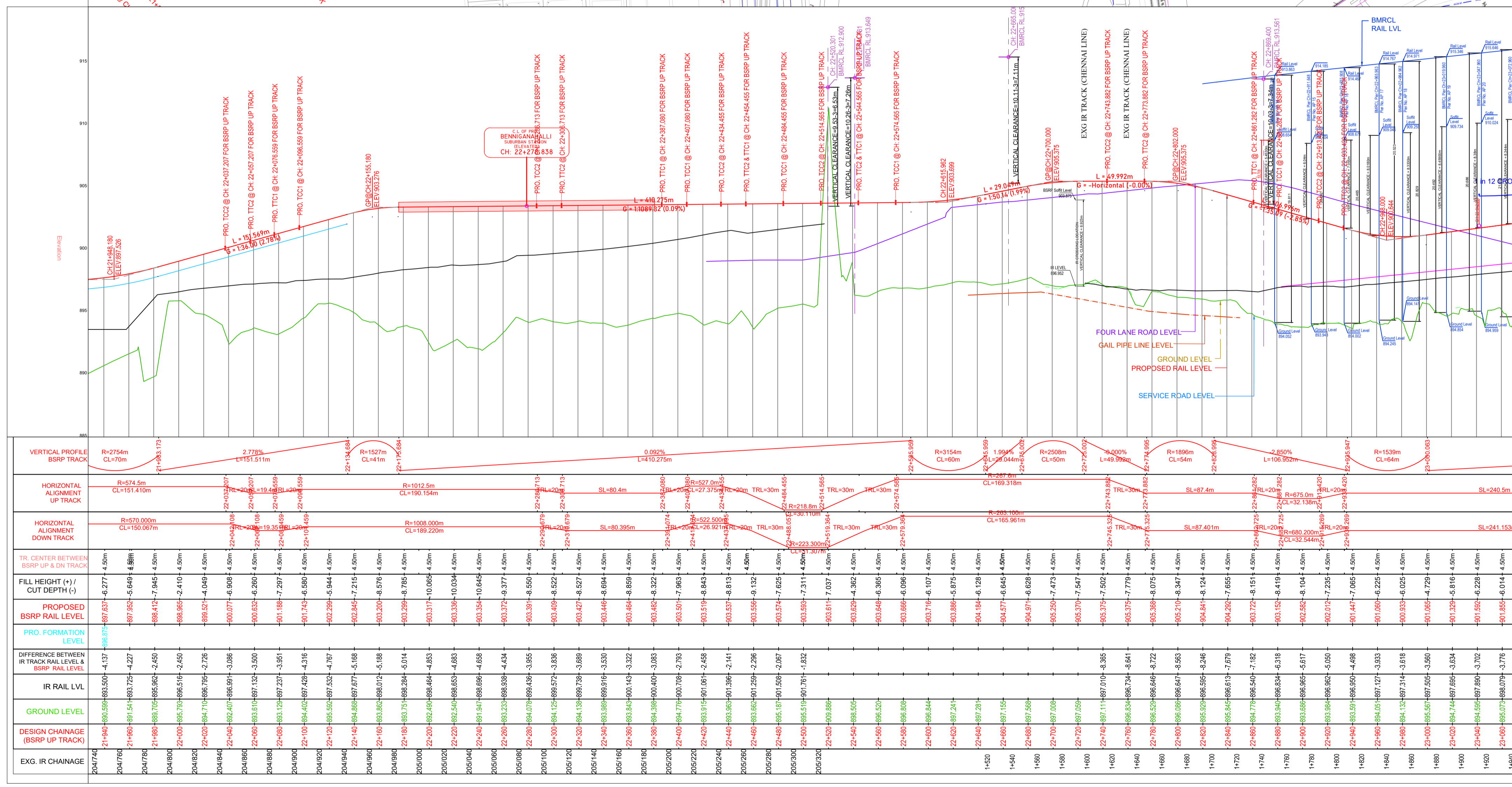
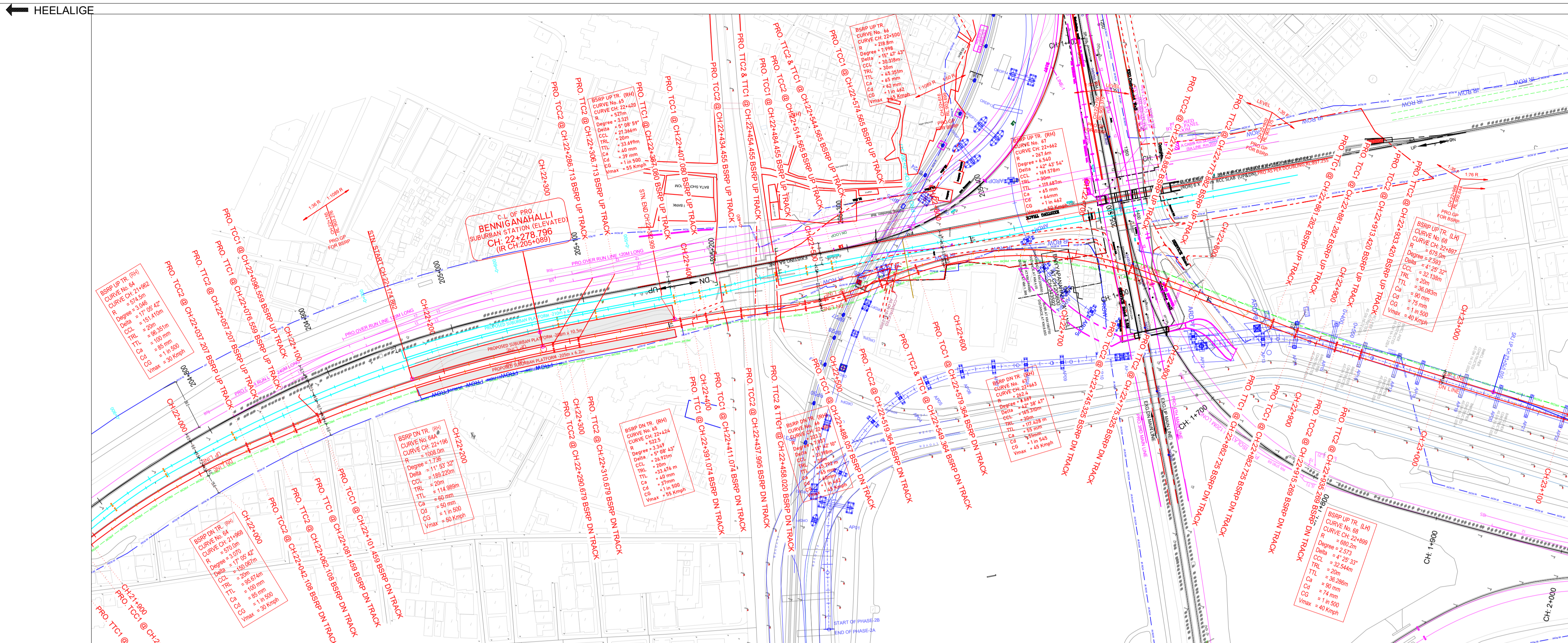
GENERAL CONSULTANTS:
AECOM WSP
 EGIS-AECOM-WSP

CONTRACTOR:

DETAILED DESIGN CONSULTANT (DDC):

PROOF CONSULTANT (PC):

TITLE: ALIGNMENT PLAN & PROFILE FROM CH: 22+000 TO CH: 23+000



STATIONING	PROPOSED BSPP RAIL LEVEL	IR RAIL LVL	GROUND LEVEL	DESIGN CHANGING (BSPP UP TRACK)	EXG. IR CHAINAGE
2047+00	893.500	893.500	893.500	-4.137	21+640
2047+10	893.500	893.500	893.500	-4.227	21+650
2047+20	893.500	893.500	893.500	-2.450	21+660
2047+30	893.500	893.500	893.500	-2.450	21+670
2047+40	893.500	893.500	893.500	-2.726	21+680
2047+50	893.500	893.500	893.500	-3.096	21+690
2047+60	893.500	893.500	893.500	-3.951	21+700
2047+70	893.500	893.500	893.500	-4.316	21+710
2047+80	893.500	893.500	893.500	-4.787	21+720
2047+90	893.500	893.500	893.500	-5.108	21+730
2048+00	893.500	893.500	893.500	-5.188	21+740
2048+10	893.500	893.500	893.500	-5.014	21+750
2048+20	893.500	893.500	893.500	-4.853	21+760
2048+30	893.500	893.500	893.500	-4.683	21+770
2048+40	893.500	893.500	893.500	-4.538	21+780
2048+50	893.500	893.500	893.500	-4.434	21+790
2048+60	893.500	893.500	893.500	-3.955	21+800
2048+70	893.500	893.500	893.500	-3.838	21+810
2048+80	893.500	893.500	893.500	-3.889	21+820
2048+90	893.500	893.500	893.500	-3.320	21+830
2049+00	893.500	893.500	893.500	-3.083	21+840
2049+10	893.500	893.500	893.500	-2.793	21+850
2049+20	893.500	893.500	893.500	-2.458	21+860
2049+30	893.500	893.500	893.500	-2.141	21+870
2049+40	893.500	893.500	893.500	-2.296	21+880
2049+50	893.500	893.500	893.500	-2.067	21+890
2049+60	893.500	893.500	893.500	-1.832	21+900
2049+70	893.500	893.500	893.500	-1.604	21+910
2049+80	893.500	893.500	893.500	-1.382	21+920
2049+90	893.500	893.500	893.500	-1.164	21+930
2050+00	893.500	893.500	893.500	-0.950	21+940
2050+10	893.500	893.500	893.500	-0.740	21+950
2050+20	893.500	893.500	893.500	-0.534	21+960
2050+30	893.500	893.500	893.500	-0.332	21+970
2050+40	893.500	893.500	893.500	-0.134	21+980
2050+50	893.500	893.500	893.500	0.060	21+990
2050+60	893.500	893.500	893.500	0.250	22+000
2050+70	893.500	893.500	893.500	0.434	22+010
2050+80	893.500	893.500	893.500	0.612	22+020
2050+90	893.500	893.500	893.500	0.784	22+030
2051+00	893.500	893.500	893.500	0.950	22+040
2051+10	893.500	893.500	893.500	1.110	22+050
2051+20	893.500	893.500	893.500	1.264	22+060
2051+30	893.500	893.500	893.500	1.412	22+070
2051+40	893.500	893.500	893.500	1.554	22+080
2051+50	893.500	893.500	893.500	1.690	22+090
2051+60	893.500	893.500	893.500	1.820	22+100
2051+70	893.500	893.500	893.500	1.944	22+110
2051+80	893.500	893.500	893.500	2.062	22+120
2051+90	893.500	893.500	893.500	2.174	22+130
2052+00	893.500	893.500	893.500	2.280	22+140
2052+10	893.500	893.500	893.500	2.380	22+150
2052+20	893.500	893.500	893.500	2.474	22+160
2052+30	893.500	893.500	893.500	2.562	22+170
2052+40	893.500	893.500	893.500	2.644	22+180
2052+50	893.500	893.500	893.500	2.720	22+190
2052+60	893.500	893.500	893.500	2.790	22+200
2052+70	893.500	893.500	893.500	2.854	22+210
2052+80	893.500	893.500	893.500	2.912	22+220
2052+90	893.500	893.500	893.500	2.964	22+230
2053+00	893.500	893.500	893.500	3.010	22+240
2053+10	893.500	893.500	893.500	3.050	22+250
2053+20	893.500	893.500	893.500	3.084	22+260
2053+30	893.500	893.500	893.500	3.112	22+270
2053+40	893.500	893.500	893.500	3.134	22+280
2053+50	893.500	893.500	893.500	3.150	22+290
2053+60	893.500	893.500	893.500	3.160	22+300
2053+70	893.500	893.500	893.500	3.164	22+310
2053+80	893.500	893.500	893.500	3.162	22+320
2053+90	893.500	893.500	893.500	3.154	22+330
2054+00	893.500	893.500	893.500	3.140	22+340
2054+10	893.500	893.500	893.500	3.120	22+350
2054+20	893.500	893.500	893.500	3.094	22+360
2054+30	893.500	893.500	893.500	3.062	22+370
2054+40	893.500	893.500	893.500	3.024	22+380
2054+50	893.500	893.500	893.500	2.980	22+390
2054+60	893.500	893.500	893.500	2.930	22+400
2054+70	893.500	893.500	893.500	2.874	22+410
2054+80	893.500	893.500	893.500	2.812	22+420
2054+90	893.500	893.500	893.500	2.744	22+430
2055+00	893.500	893.500	893.500	2.670	22+440
2055+10	893.500	893.500	893.500	2.590	22+450
2055+20	893.500	893.500	893.500	2.504	22+460
2055+30	893.500	893.500	893.500	2.412	22+470
2055+40	893.500	893.500	893.500	2.314	22+480
2055+50	893.500	893.500	893.500	2.210	22+490
2055+60	893.500	893.500	893.500	2.100	22+500
2055+70	893.500	893.500	893.500	1.984	22+510
2055+80	893.500	893.500	893.500	1.862	22+520
2055+90	893.500	893.500	893.500	1.734	22+530
2056+00	893.500	893.500	893.500	1.600	22+540
2056+10	893.500	893.500	893.500	1.460	22+550
2056+20	893.500	893.500	893.500	1.314	22+560
2056+30	893.500	893.500	893.500	1.162	22+570
2056+40	893.500	893.500	893.500	1.004	22+580
2056+50	893.500	893.500	893.500	0.840	22+590
2056+60	893.500	893.500	893.500	0.670	22+600
2056+70	893.500	893.500	893.500	0.494	22+610
2056+80	893.500	893.500	893.500	0.312	22+620
2056+90	893.500	893.500	893.500	0.124	22+630
2057+00	893.500	893.500	893.500	-0.070	22+640
2057+10	893.500	893.500	893.500	-0.260	22+650
2057+20	893.500	893.500	893.500	-0.444	22+660
2057+30	893.500	893.500	893.500	-0.622	22+670
2057+40	893.500	893.500	893.500	-0.794	22+680
2057+50	893.500	893.500	893.500	-0.960	22+690
2057+60	893.500	893.500	893.500	-1.120	22+700
2057+70	893.500	893.500	893.500	-1.274	22+710
2057+80	893.500	893.500	893.500	-1.422	22+720
2057+90	893.500	893.500	893.500	-1.564	22+730
2058+00	893.500	893.500	893.500	-1.700	22+740
2058+10	893.500	893.500	893.500	-1.830	22+750
2058+20	893.500	893.500	893.500	-1.954	22+760
2058+30	893.500	893.500	893.500	-2.072	22+770
2058+40	893.500	893.500	893.500	-2.184	22+780
2058+50	893.500	893.500	893.500	-2.290	22+790
2058+60	893.500	893.500	893.500	-2.390	22+800
2058+70	893.500	893.500	893.500	-2.484	22+810
2058+80	893.500	893.500	893.500	-2.572	22+820
2058+90	893.500	893.500	893.500	-2.654	22+830
2059+00	893.500	893.500	893.500	-2.730	22+840
2059+10	893.500	893.500	893.500	-2.800	22+850
2059+20	893.500	893.500	893.500	-2.864	22+860
2059+30	893.500	893.500	893.500	-2.922	22+870
2059+40	893.500	893.500	893.500	-2.974	22+880
2059+50	893.500	893.500	893.500	-3.020	22+890
2059+60	893.500	893.500	893.500	-3.060	22+900
2059+70	893.500	893.500	893.500	-3.094	22+910
2059+80	893.500	893.500	893.500	-3.122	22+920
2059+90	893.500	893.500	893.500	-3.144	22+930
2060+00	893.500	893.500	893.500	-3.160	22+940
2060+10	893.500	893.500	893.500	-3.170	22+950
2060+20	893.500	893.500	893.500	-3.174	22+960
2060+30	893.500	893.500	893.500	-3.170	22+970
2060+40	893.500	893.500	893.500	-3.160	22+980
2060+50	893.500	893.500	893.500	-3.144	22+990
2060+60	893.500	893.500	893.500	-3.122	23+000
2060+70	893.500	893.500	893.500	-3.094	23+010
2060+80	893.500	893.500	893.500	-3.060	23+020
2060+90	893.500	893.500	893.500	-3.020	23+030
2061+00	893.500	893.500	893.500	-2.974	23+040
2061+10	893.500	893.500	893.500	-2.922	23+050
2061+20	893.500	893.500	893.500	-2.864	23+060
2061+30	893.500	893.500	893.500	-2.800	23+070
2061+40	893.500	893.500	893.500	-2.730	

This drawing is the property of K-RIDE and must not be passed on to any person or body not authorised by us to receive it nor be copied or otherwise made use either in full or in part by such person or body without our prior permission in writing.

- NOTES-
1. ALL DIMENSIONS ARE IN METER UNLESS OTHERWISE STATED.
 2. DRAIN / RETAINING WALL DETAILS SHALL BE SUBMITTED SEPARATELY.
 3. SCHEDULE OF DIMENSIONS FOLLOWED AS PER BSRP.
 4. P-WAY DESIGN DETAILS ARE NOT PART OF THIS PACKAGE SCOPE.
 5. THE RUB/ROB/BRIDGES/STRUCTURE SHOWN IN THE DRAWING SHALL BE REFERRED TO RESPECTIVE GAD'S FOR DETAILS.
 6. DESIGN SLOPES SHALL BE AS PER THE APPROVED DESIGN REPORT.
 7. IR DOUBLING SHOWN IN PLAN IS AS PER CLIENTS TENDER STAGE DRAWING AND NOT FINAL.

LEGEND FOR PLAN:

PROPOSED BSRP TRACK	
FUTURE BSRP WORK	
EXISTING IR TRACK	
FUTURE IR WORK	
EXISTING IR ROW	
PROPOSED BSRP ROW (LAQ)	

LEGEND FOR PROFILE:

PROPOSED BSRP FORMATION LEVEL	
PROPOSED BSRP RAIL LEVEL	
EXISTING IR RAIL LEVEL	
GROUND LEVEL	

ALIGNMENT NOTATIONS:

R = RADIUS	G = GRADIENT
CC = CIRCULAR CURVE LENGTH	L = GRADIENT LENGTH
TTC1 = TANGENT TO SPIRAL	TTC2 = CURVE TO SPIRAL
TTL = TANGENT LENGTH	CC1 = SPIRAL TO CURVE
Ca = ACTUAL CANT	TTC2 = CURVE TO SPIRAL
Cg = CANT DEFICIENT	TTC2 = SPIRAL TO TANGENT
Cg = CANT GRADIENT	

PROJECT: BENGALURU SUBURBAN RAILWAY PROJECT (BSRP) - CORRIDOR - 4

EMPLOYER: RAIL INFRASTRUCTURE DEVELOPMENT COMPANY (KARNATAKA) LIMITED

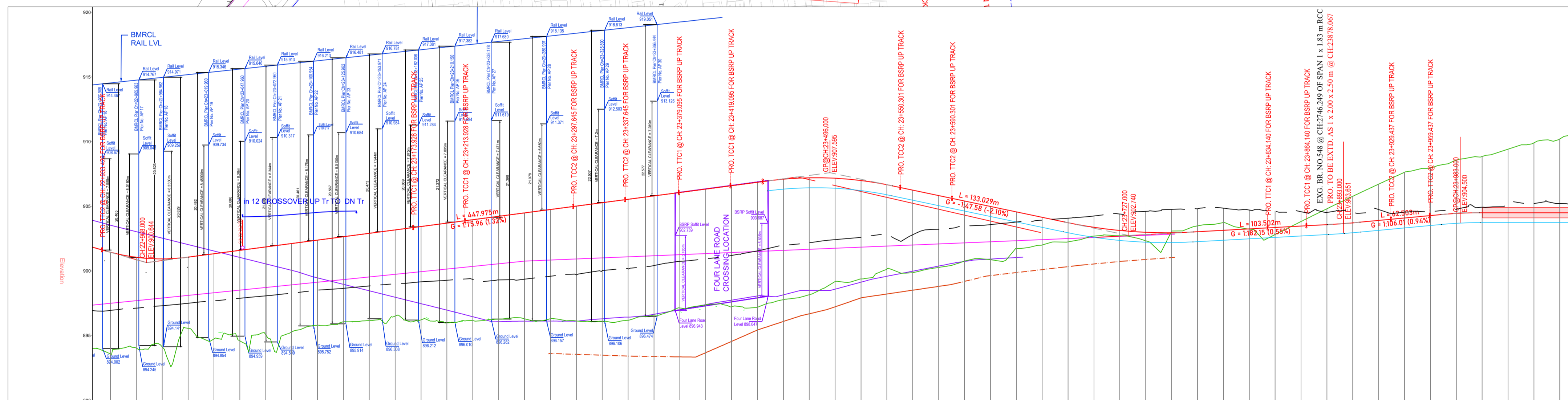
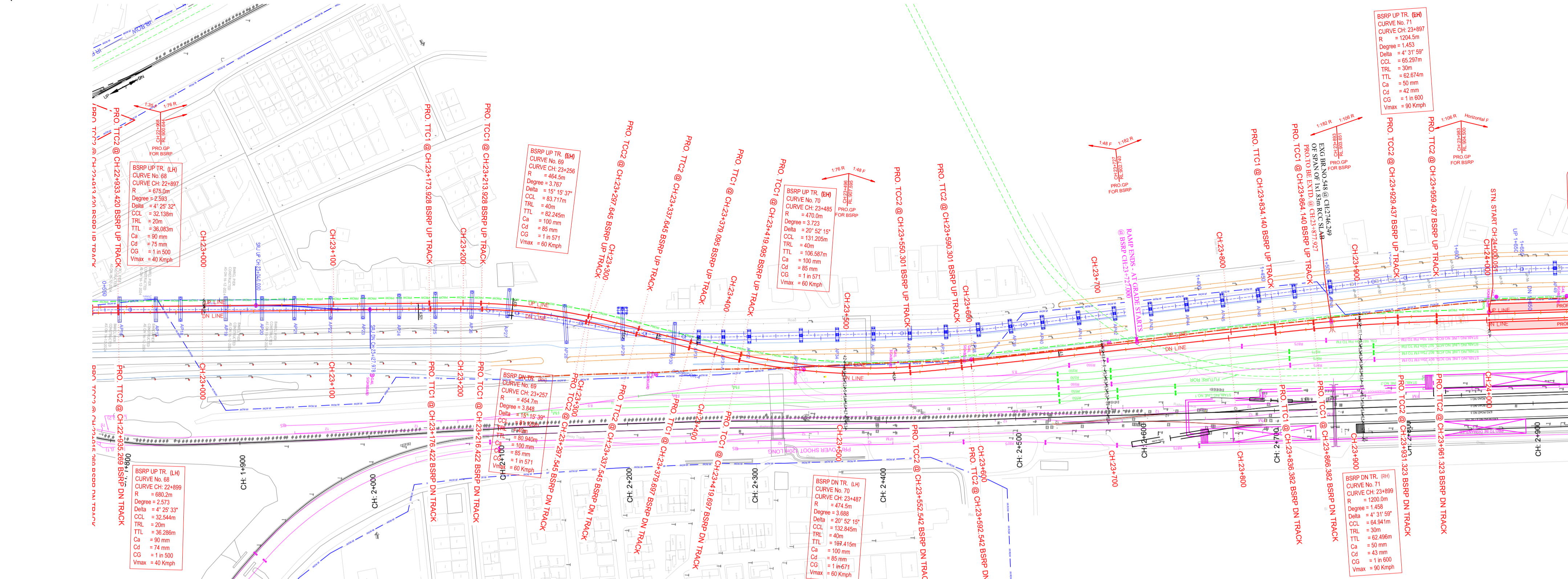
GENERAL CONSULTANTS: AECOM WSP
EGIS-AECOM-WSP

CONTRACTOR:

DETAILED DESIGN CONSULTANT (DDC):

PROOF CONSULTANT (PC):

TITLE: ALIGNMENT PLAN & PROFILE FROM CH: 23+000 TO CH:24+000



VERTICAL PROFILE BSRP TRACK	R=1530m CL=64m	1.3117% L=447.937m	R=2906m CL=96m	-2.102% L=133.000m	R=3772m CL=100m	0.543% L=103.500m	R=1530m CL=64m	0.943% L=102.500m	R=1100m CL=50m	0.943% L=102.500m
HORIZONTAL ALIGNMENT UP TRACK	SL=249.50m	TR=40m	R=254.5m CL=63.717m	TR=40m	R=470.0m CL=131.205m	TR=40m	R=1204.5m CL=65.297m	TR=40m	R=1200.000m CL=64.941m	TR=40m
HORIZONTAL ALIGNMENT DOWN TRACK	SL=241.153m	TR=40m	R=454.750m CL=61.123m	TR=40m	R=474.500m CL=132.845m	TR=40m	TR=40m	TR=40m	TR=40m	TR=40m
TR CENTER BETWEEN BSRP UP & DN TRACK	4.90m	4.90m	4.90m	4.90m	4.90m	4.90m	4.90m	4.90m	4.90m	4.90m
FILL HEIGHT (+) / CUT DEPTH (-)	-0.01447	-0.01065	-0.00835	-0.00658	-0.00512	-0.00402	-0.00312	-0.00242	-0.00188	-0.00147
PROPOSED BSRP RAIL LEVEL	901.447	901.065	900.835	900.658	900.512	900.402	900.312	900.242	900.188	900.147
PRO. FORMATION LEVEL	901.447	901.065	900.835	900.658	900.512	900.402	900.312	900.242	900.188	900.147
DIFFERENCE BETWEEN IR TRACK RAIL LEVEL & BSRP RAIL LEVEL	0.00000	0.00000	0.00000	0.00000	0.00000	0.00000	0.00000	0.00000	0.00000	0.00000
IR RAIL LVL	901.447	901.065	900.835	900.658	900.512	900.402	900.312	900.242	900.188	900.147
GROUND LEVEL	901.447	901.065	900.835	900.658	900.512	900.402	900.312	900.242	900.188	900.147
DESIGN CHAINAGE (BSRP UP TRACK)	23+000	23+050	23+100	23+150	23+200	23+250	23+300	23+350	23+400	23+450
EXG. IR CHAINAGE	23+000	23+050	23+100	23+150	23+200	23+250	23+300	23+350	23+400	23+450

GENERAL CONSULTANTS

NAME	DESIGNATION	DATE	SIGN	PROJECT DIRECTOR
				SIGN
				NAME
				DATE

EMPLOYER

SIGNATURE

NAME

DESIGNATION

DATE

REVISIONS

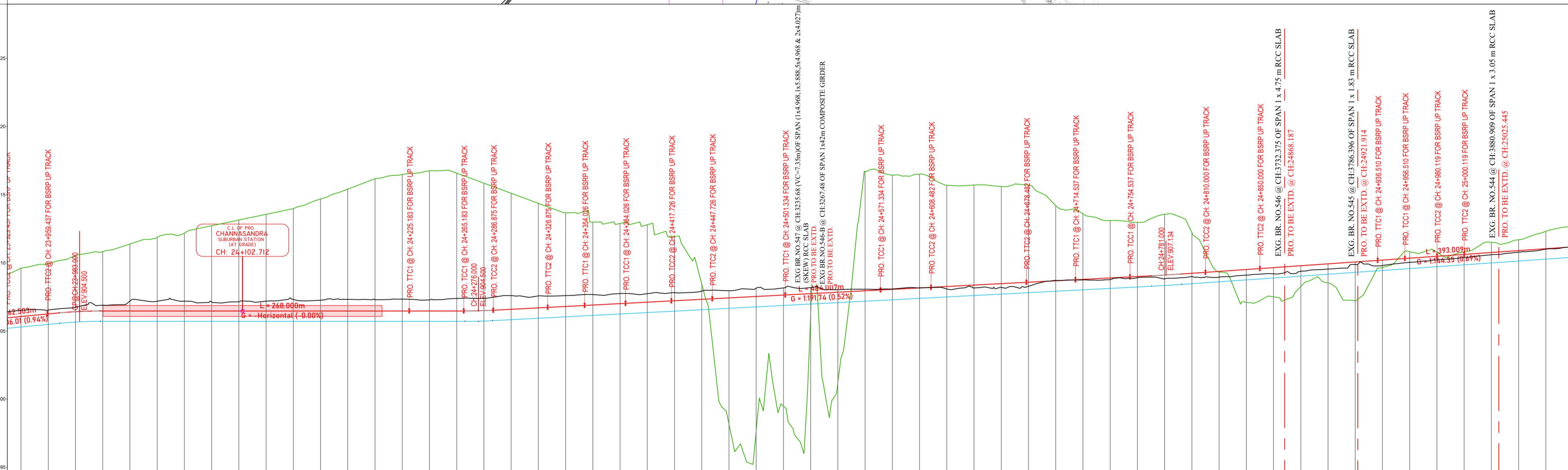
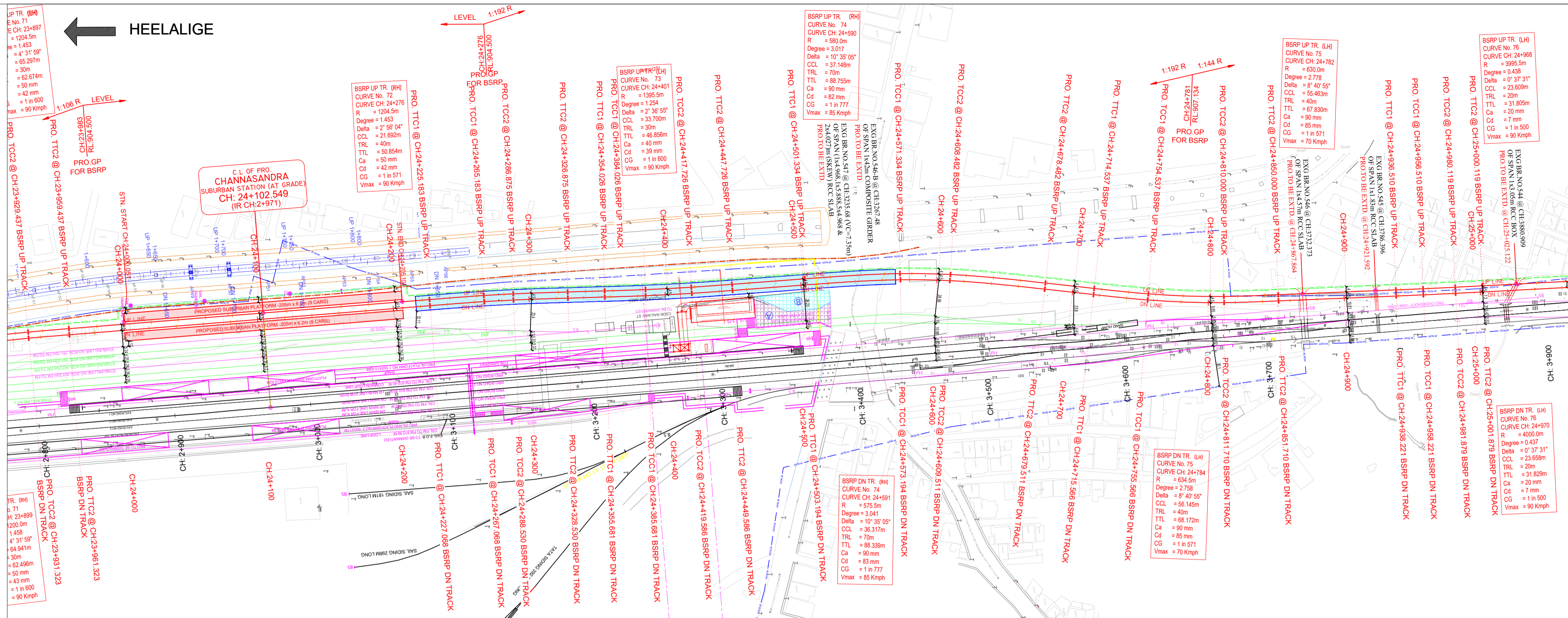
NO.	DESCRIPTION	DATE
0		

PROJECTION

RELEASED FOR	<input type="checkbox"/> PRELIMINARY
GOOD FOR	<input checked="" type="checkbox"/> DEFINITIVE
CONSTRUCTION	<input type="checkbox"/> AS BUILT

DRG. No: 024008-C-R-L-101-P-3024

REVISION	0
DWG STATUS	D
DATE	25.06.2026
SCALE	H-1:2000, V-1:200
SIZE	A1
SHEET	25 OF 27
DRG. No:	024008-C-R-L-101-P-3024



STATIONING	PROPOSED BSRP RAIL LEVEL	PRO FORMATION LEVEL	EXISTING IR RAIL LVL	GROUND LEVEL	DESIGN CHAINAGE (BSRP UP TRACK)	EXG. IR CHAINAGE
23+940	907.820	904.354	904.354	907.820	23+940	23+940
24+000	908.858	904.923	904.923	908.858	24+000	24+000
24+100	910.174	905.174	905.174	910.174	24+100	24+100
24+200	911.590	905.217	905.217	911.590	24+200	24+200
24+300	913.006	905.251	905.251	913.006	24+300	24+300
24+400	914.422	905.285	905.285	914.422	24+400	24+400
24+500	915.838	905.319	905.319	915.838	24+500	24+500
24+600	917.254	905.353	905.353	917.254	24+600	24+600
24+700	918.670	905.387	905.387	918.670	24+700	24+700
24+800	920.086	905.421	905.421	920.086	24+800	24+800
24+900	921.502	905.455	905.455	921.502	24+900	24+900
25+000	922.918	905.489	905.489	922.918	25+000	25+000

This drawing is the property of **K-RIDE** and must not be passed on to any person or body not authorised by us to receive it nor be copied or otherwise made use either in full or in part by such person or body without our prior permission in writing.

NOTES:

- ALL DIMENSIONS ARE IN METER UNLESS OTHERWISE STATED.
- DRAIN / RETAINING WALL DETAILS SHALL BE SUBMITTED SEPARATELY.
- SCHEDULE OF DIMENSIONS FOLLOWED AS PER BSRP.
- P-WAY DESIGN DETAILS ARE NOT PART OF THIS PACKAGE SCOPE.
- THE RUB/ROB/BRIDGES/STRUCTURE SHOWN IN THE DRAWING SHALL BE REFERRED TO RESPECTIVE GAD'S FOR DETAILS.
- DESIGN SLOPES SHALL BE AS PER THE APPROVED DESIGN REPORT.
- IR DOUBLING SHOWN IN PLAN IS AS PER CLIENTS TENDER STATGE DRAWING AND NOT FINAL.

LEGEND FOR PLAN:
PROPOSED BSRP TRACK
FUTURE BSRP WORK
EXISTING IR TRACK
FUTURE IR WORK
EXISTING IR ROW
PROPOSED BSRP ROW (LAQ)

LEGEND FOR PROFILE:
PROPOSED BSRP FORMATION LEVEL
PROPOSED BSRP RAIL LEVEL
EXISTING IR RAIL LEVEL
GROUND LEVEL

ALIGNMENT NOTATIONS:
 R = RADIUS
 CCL = CIRCULAR CURVE LENGTH
 TRL = TRANSITION LENGTH
 TTL = TANGENT LENGTH
 Ca = ACTUAL CANT
 Cd = CANT DEFICIENT
 Cg = CANT GRADIENT

**G = GRADIENT
 L = GRADIENT LENGTH
 TCC1 = SPIRAL TO CURVE
 TCC2 = CURVE TO SPIRAL**

PROJECT :
 BENGALURU SUBURBAN RAILWAY PROJECT (BSRP) - CORRIDOR - 4

EMPLOYER :
 RAIL INFRASTRUCTURE DEVELOPMENT COMPANY (KARNATAKA) LIMITED

GENERAL CONSULTANTS :
 EGIS AECOM WSP

CONTRACTOR :
 EGIS-AECOM-WSP

DETAILED DESIGN CONSULTANT (DDC) :

PROOF CONSULTANT (PC) :

TITLE:
 ALIGNMENT PLAN & PROFILE FROM CH: 24+000 TO CH:25+000

GENERAL CONSULTANTS

NAME	DESIGNATION	DATE	SIGN	PROJECT DIRECTOR
				SIGN
				NAME
				DATE

EMPLOYER

SIGNATURE

NAME

DESIGNATION

DATE

REVISIONS

REVISION	DATE	SCALE	SIZE	SHEET	DRG. No.
0	25.06.2026	H-1:2000, V-1:200	A1	26 OF 47	02 4 0 8 - C - R L 1 0 - P P 3 0 2 6

PROJECTION
 FIRST ANGLE

RELEASED FOR
 PRELIMINARY
 DEFINITIVE
 GOOD FOR CONSTRUCTION
 AS BUILT

This drawing is the property of K-RIDE and must not be passed on to any person or body not authorised by us to receive it nor be copied or otherwise made use either in full or in part by this person or body without our prior permission in writing.

- NOTES-
1. ALL DIMENSIONS ARE IN METER UNLESS OTHERWISE STATED.
 2. DRAIN / RETAINING WALL DETAILS SHALL BE SUBMITTED SEPARATELY.
 3. SCHEDULE OF DIMENSIONS FOLLOWED AS PER BSRP.
 4. P-WAY DESIGN DETAILS ARE NOT PART OF THIS PACKAGE SCOPE.
 5. THE RUB/ROB/BRIDGES/STRUCTURE SHOWN IN THE DRAWING SHALL BE REFERRED TO RESPECTIVE GAD'S FOR DETAILS.
 6. DESIGN SLOPES SHALL BE AS PER THE APPROVED DESIGN REPORT.
 7. IR DOUBLING SHOWN IN PLAN IS AS PER CLIENTS TENDER STAGE DRAWING AND NOT FINAL.

LEGEND FOR PLAN:

PROPOSED BSRP TRACK	—
FUTURE BSRP WORK	---
EXISTING IR TRACK	—
FUTURE IR WORK	---
EXISTING IR ROW	—
PROPOSED BSRP ROW (LAQ)	---

LEGEND FOR PROFILE:

PROPOSED BSRP FORMATION LEVEL	—
PROPOSED BSRP RAIL LEVEL	---
EXISTING IR RAIL LEVEL	—
GROUND LEVEL	---

ALIGNMENT NOTATIONS:

R = RADIUS	G = GRADIENT
CCL = CIRCULAR CURVE LENGTH	L = GRADIENT LENGTH
TRL = TRANSITION LENGTH	TTC1 = TANGENT TO SPIRAL
TTL = TANGENT LENGTH	TTC2 = CURVE TO SPIRAL
Ca = ACTUAL CANT	TTC2 = SPIRAL TO TANGENT
Cd = CANT DEFICIENT	
Cg = CANT GRADIENT	

PROJECT : BENGALURU SUBURBAN RAILWAY PROJECT (BSRP) - CORRIDOR - 4

EMPLOYER : RAIL INFRASTRUCTURE DEVELOPMENT COMPANY (KARNATAKA) LIMITED

GENERAL CONSULTANTS : egis AECOM wsp
EGIS-AECOM-WSP

CONTRACTOR :

DETAILED DESIGN CONSULTANT (DDC) :

PROOF CONSULTANT (PC) :

TITLE : ALIGNMENT PLAN & PROFILE FROM CH: 26+000 TO CH:27+000

GENERAL CONSULTANTS

NAME	DESIGNATION	DATE	SIGN	PROJECT DESIGNER

EMPLOYER

NAME	DESIGNATION	DATE

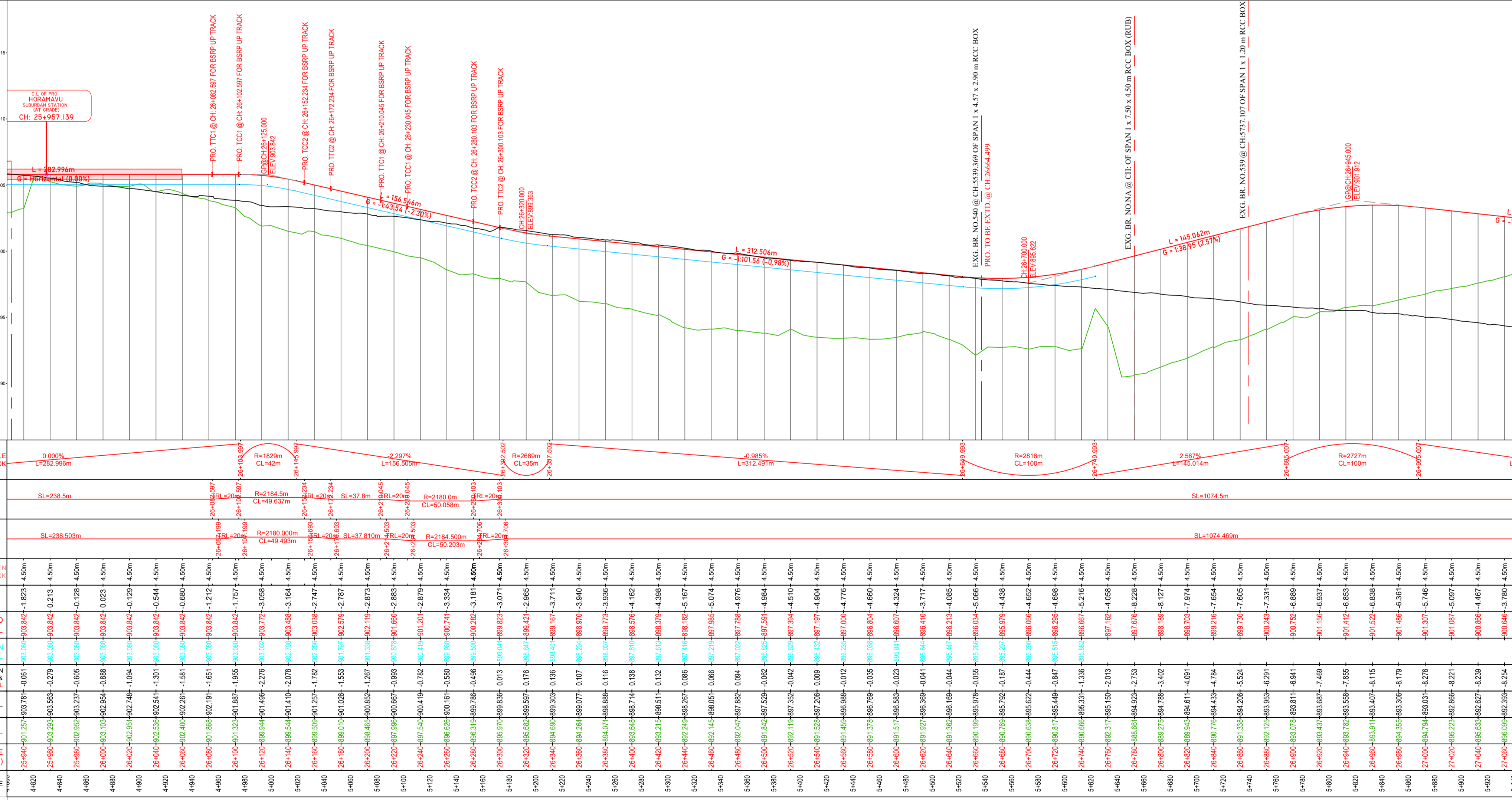
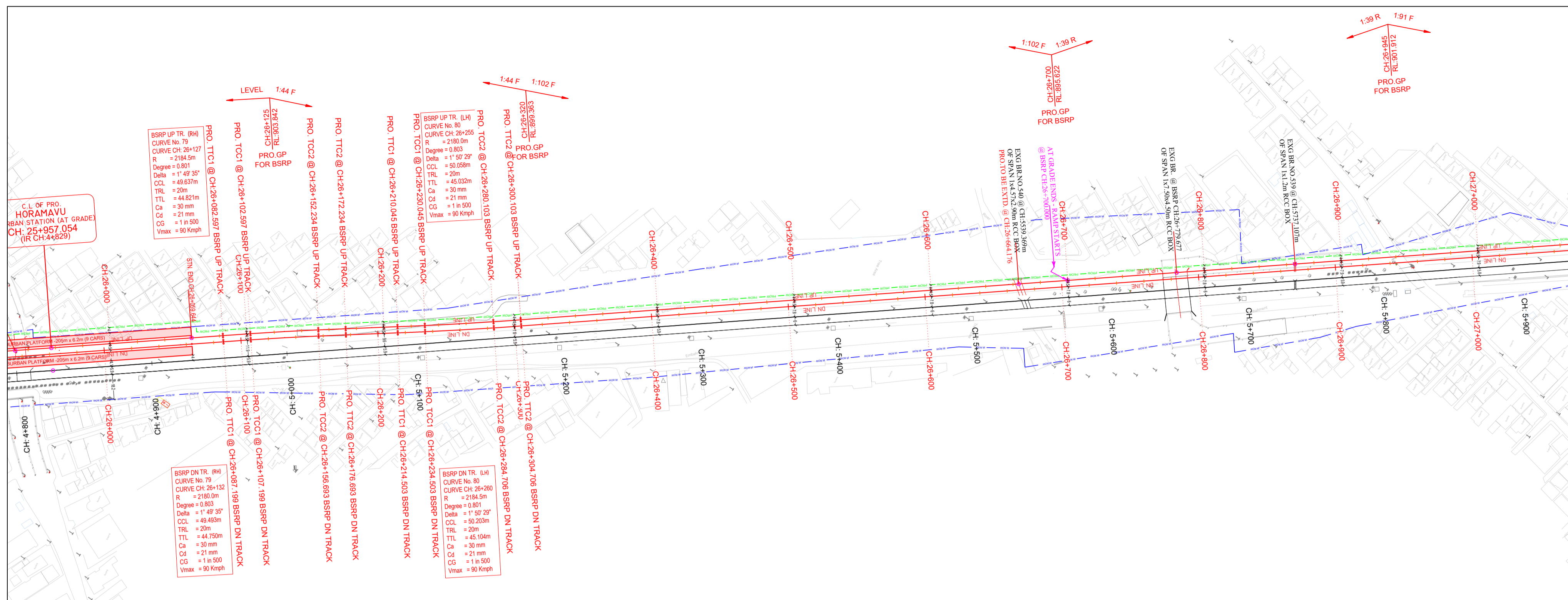
SIGNATURE

NAME	
DESIGNATION	
DATE	

REVISIONS

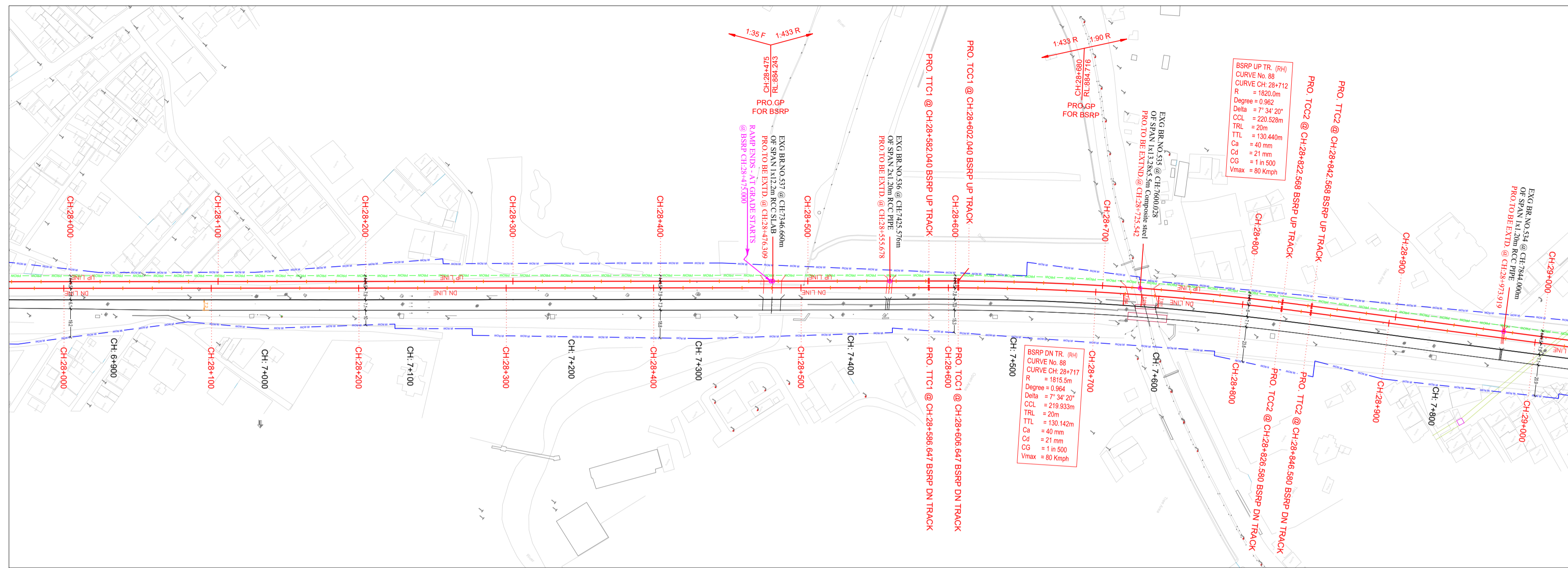
NO.	DESCRIPTION	DATE

REVISION	0	PROJECTION	RELEASED FOR
DWG STATUS	D		PRELIMINARY
DATE	25.08.2026		DEFINITIVE
SCALE	H:1:2000, V:1:200		GOOD FOR
SIZE	A1		CONSTRUCTION
SHEET	28 OF 47		AS BUILT
DRG. No	02 4 10 8 C R L 1 10 P 1 3 10 2 8		



CH	VERTICAL PROFILE BSRP TRACK	HORIZONTAL ALIGNMENT UP TRACK	HORIZONTAL ALIGNMENT DOWN TRACK	TR. CENTER BETWEEN BSRP UP & DN TRACK	FILL HEIGHT (+) / CUT DEPTH (-)	PROPOSED BSRP RAIL LEVEL	PRO. FORMATION LEVEL	DIFFERENCE BETWEEN IR TRACK RAIL LEVEL & BSRP RAIL LEVEL	EXG IR RAIL LVL	GROUND LEVEL	DESIGN CHAINAGE (BSRP UP TRACK)	EXG. IR CHAINAGE
25+940	0.00%	SL=238.53m	SL=238.503m	4.50m	1.823	903.842	903.842	-0.061	903.791	903.251	25+940	4420
25+960	0.00%	SL=238.53m	SL=238.53m	4.50m	0.213	903.842	903.842	-0.279	903.563	903.251	25+960	4440
25+980	0.00%	SL=238.53m	SL=238.53m	4.50m	-0.128	903.842	903.842	-0.805	903.037	903.251	25+980	4460
26+000	0.00%	SL=238.53m	SL=238.53m	4.50m	0.023	903.842	903.842	-0.888	903.000	903.251	26+000	4480
26+020	0.00%	SL=238.53m	SL=238.53m	4.50m	-0.128	903.842	903.842	-1.091	902.749	903.251	26+020	4500
26+040	0.00%	SL=238.53m	SL=238.53m	4.50m	-0.544	903.842	903.842	-1.581	902.259	903.251	26+040	4520
26+060	0.00%	SL=238.53m	SL=238.53m	4.50m	-0.680	903.842	903.842	-1.551	902.291	903.251	26+060	4540
26+080	0.00%	SL=238.53m	SL=238.53m	4.50m	-1.212	903.842	903.842	-1.556	902.285	903.251	26+080	4560
26+100	0.00%	SL=238.53m	SL=238.53m	4.50m	-1.757	903.842	903.842	-1.556	902.285	903.251	26+100	4580
26+120	0.00%	SL=238.53m	SL=238.53m	4.50m	-3.058	903.842	903.842	-2.276	901.569	903.251	26+120	4600
26+140	0.00%	SL=238.53m	SL=238.53m	4.50m	-3.164	903.842	903.842	-2.078	901.761	903.251	26+140	4620
26+160	0.00%	SL=238.53m	SL=238.53m	4.50m	-2.747	903.842	903.842	-1.782	902.059	903.251	26+160	4640
26+180	0.00%	SL=238.53m	SL=238.53m	4.50m	-2.287	903.842	903.842	-1.553	902.279	903.251	26+180	4660
26+200	0.00%	SL=238.53m	SL=238.53m	4.50m	-2.873	903.842	903.842	-1.287	902.554	903.251	26+200	4680
26+220	0.00%	SL=238.53m	SL=238.53m	4.50m	-2.883	903.842	903.842	-0.960	902.881	903.251	26+220	4700
26+240	0.00%	SL=238.53m	SL=238.53m	4.50m	-2.879	903.842	903.842	-0.782	903.059	903.251	26+240	4720
26+260	0.00%	SL=238.53m	SL=238.53m	4.50m	-3.334	903.842	903.842	-0.500	903.339	903.251	26+260	4740
26+280	0.00%	SL=238.53m	SL=238.53m	4.50m	-3.181	903.842	903.842	-0.496	903.335	903.251	26+280	4760
26+300	0.00%	SL=238.53m	SL=238.53m	4.50m	-3.071	903.842	903.842	-0.015	903.828	903.251	26+300	4780
26+320	0.00%	SL=238.53m	SL=238.53m	4.50m	-2.285	903.842	903.842	0.015	904.563	903.251	26+320	4800
26+340	0.00%	SL=238.53m	SL=238.53m	4.50m	-3.711	903.842	903.842	0.036	903.806	903.251	26+340	4820
26+360	0.00%	SL=238.53m	SL=238.53m	4.50m	-3.940	903.842	903.842	0.107	903.527	903.251	26+360	4840
26+380	0.00%	SL=238.53m	SL=238.53m	4.50m	-3.326	903.842	903.842	0.116	903.912	903.251	26+380	4860
26+400	0.00%	SL=238.53m	SL=238.53m	4.50m	-1.162	903.842	903.842	0.138	907.705	903.251	26+400	4880
26+420	0.00%	SL=238.53m	SL=238.53m	4.50m	-4.398	903.842	903.842	0.132	907.471	903.251	26+420	4900
26+440	0.00%	SL=238.53m	SL=238.53m	4.50m	-5.167	903.842	903.842	-0.086	907.244	903.251	26+440	4920
26+460	0.00%	SL=238.53m	SL=238.53m	4.50m	-5.074	903.842	903.842	0.064	907.157	903.251	26+460	4940
26+480	0.00%	SL=238.53m	SL=238.53m	4.50m	-4.976	903.842	903.842	0.094	907.071	903.251	26+480	4960
26+500	0.00%	SL=238.53m	SL=238.53m	4.50m	-4.984	903.842	903.842	-0.002	906.985	903.251	26+500	4980
26+520	0.00%	SL=238.53m	SL=238.53m	4.50m	-4.510	903.842	903.842	-0.042	906.510	903.251	26+520	5000
26+540	0.00%	SL=238.53m	SL=238.53m	4.50m	-4.904	903.842	903.842	0.009	906.035	903.251	26+540	5020
26+560	0.00%	SL=238.53m	SL=238.53m	4.50m	-4.50m	903.842	903.842	0.012	905.560	903.251	26+560	5040
26+580	0.00%	SL=238.53m	SL=238.53m	4.50m	-4.680	903.842	903.842	0.035	905.085	903.251	26+580	5060
26+600	0.00%	SL=238.53m	SL=238.53m	4.50m	-4.324	903.842	903.842	0.022	904.610	903.251	26+600	5080
26+620	0.00%	SL=238.53m	SL=238.53m	4.50m	-4.085	903.842	903.842	0.044	904.135	903.251	26+620	5100
26+640	0.00%	SL=238.53m	SL=238.53m	4.50m	-4.095	903.842	903.842	0.055	903.660	903.251	26+640	5120
26+660	0.00%	SL=238.53m	SL=238.53m	4.50m	-4.438	903.842	903.842	0.025	903.185	903.251	26+660	5140
26+680	0.00%	SL=238.53m	SL=238.53m	4.50m	-4.652	903.842	903.842	0.044	902.710	903.251	26+680	5160
26+700	0.00%	SL=238.53m	SL=238.53m	4.50m	-4.688	903.842	903.842	0.847	902.235	903.251	26+700	5180
26+720	0.00%	SL=238.53m	SL=238.53m	4.50m	-5.216	903.842	903.842	1.339	901.760	903.251	26+720	5200
26+740	0.00%	SL=238.53m	SL=238.53m	4.50m	-4.058	903.842	903.842	-0.972	901.285	903.251	26+740	5220
26+760	0.00%	SL=238.53m	SL=238.53m	4.50m	-4.228	903.842	903.842	-0.870	900.810	903.251	26+760	5240
26+780	0.00%	SL=238.53m	SL=238.53m	4.50m	-4.127	903.842	903.842	-0.688	900.335	903.251	26+780	5260
26+800	0.00%	SL=238.53m	SL=238.53m	4.50m	-7.974	903.842	903.842	-4.091	900.110	903.251	26+800	5280
26+820	0.00%	SL=238.53m	SL=238.53m	4.50m	-7.654	903.842	903.842	-4.734	900.215	903.251	26+820	5300
26+840	0.00%	SL=238.53m	SL=238.53m	4.50m	-7.605	903.842	903.842	-6.524	900.320	903.251	26+840	5320
26+860	0.00%	SL=238.53m	SL=238.53m	4.50m	-7.331	903.842	903.842	-8.291	900.425	903.251	26+860	5340
26+880	0.00%	SL=238.53m	SL=238.53m	4.50m	-6.889	903.842	903.842	-8.941	900.530	903.251	26+880	5360
26+900	0.00%	SL=238.53m	SL=238.53m	4.50m	-6.037	903.842	903.842	-7.469	900.635	903.251	26+900	5380
26+920	0.00%	SL=238.53m	SL=238.53m	4.50m	-6.853	903.842	903.842	-7.855	900.740	903.251	26+920	5400
26+940	0.00%	SL=238.53m	SL=238.53m	4.50m	-6.838	903.842	903.842	-8.115	900.845	903.251	26+940	5420
26+960	0.00%	SL=238.53m	SL=238.53m	4.50m	-6.361	903.842	903.842	-8.179	900.950	903.251	26+960	5440
26+980	0.00%	SL=238.53m	SL=238.53m	4.50m	-5.746	903.842	903.842	-8.278	901.055	903.251	26+980	5460
27+000	0.00%	SL=238.53m	SL=238.53m	4.50m	-5.097	903.842	903.842	-8.221	901.160	903.251	27+000	5480
27+020	0.00%	SL=238.53m	SL=238.53m	4.50m	-4.467	903.842	903.842	-8.239	901.265	903.251	27+020	5500
27+040	0.00%	SL=238.53m	SL=238.53m	4.50m	-3.786	903.842	903.842	-8.254	901.370	903.251	27+040	5520

This drawing is the property of K-RIDE and must not be passed on to any person or body not authorised by us to receive it nor be copied or otherwise made use either in full or in part by such person or body without our prior permission in writing.



- NOTES-**
1. ALL DIMENSIONS ARE IN METER UNLESS OTHERWISE STATED.
 2. DRAIN / RETAINING WALL DETAILS SHALL BE SUBMITTED SEPARATELY.
 3. SCHEDULE OF DIMENSIONS FOLLOWED AS PER BSRP.
 4. P-WAY DESIGN DETAILS ARE NOT PART OF THIS PACKAGE SCOPE.
 5. THE RUB/ROB/BRIDGES/STRUCTURE SHOWN IN THE DRAWING SHALL BE REFERRED TO RESPECTIVE GAD'S FOR DETAILS.
 6. DESIGN SLOPES SHALL BE AS PER THE APPROVED DESIGN REPORT.
 7. IR DOUBLING SHOWN IN PLAN IS AS PER CLIENTS TENDER STATGE DRAWING AND NOT FINAL.

LEGEND FOR PLAN:

PROPOSED BSRP TRACK	— (Red line)
FUTURE BSRP WORK	— (Blue line)
EXISTING IR TRACK	— (Black line)
FUTURE IR WORK	— (Green line)
EXISTING IR ROW	— (Dashed line)
PROPOSED BSRP ROW (LAQ)	— (Green line)

LEGEND FOR PROFILE:

PROPOSED BSRP FORMATION LEVEL	— (Red line)
PROPOSED BSRP RAIL LEVEL	— (Blue line)
EXISTING IR RAIL LEVEL	— (Black line)
GROUND LEVEL	— (Green line)

ALIGNMENT NOTATIONS:

R = RADIUS	G = GRADIENT
CCL = CIRCULAR CURVE LENGTH	L = GRADIENT LENGTH
TRL = TRANSITION LENGTH	TTC1 = SPIRAL TO CURVE
TTL = TANGENT LENGTH	TTC2 = CURVE TO SPIRAL
Ca = ACTUAL CANT	Cd = CANT DEFICIENT
Cg = CANT GRADIENT	TTC2 = SPIRAL TO TANGENT

PROJECT:
BENGALURU SUBURBAN RAILWAY PROJECT (BSRP) - CORRIDOR - 4

EMPLOYER:
RAIL INFRASTRUCTURE DEVELOPMENT COMPANY (KARNATAKA) LIMITED

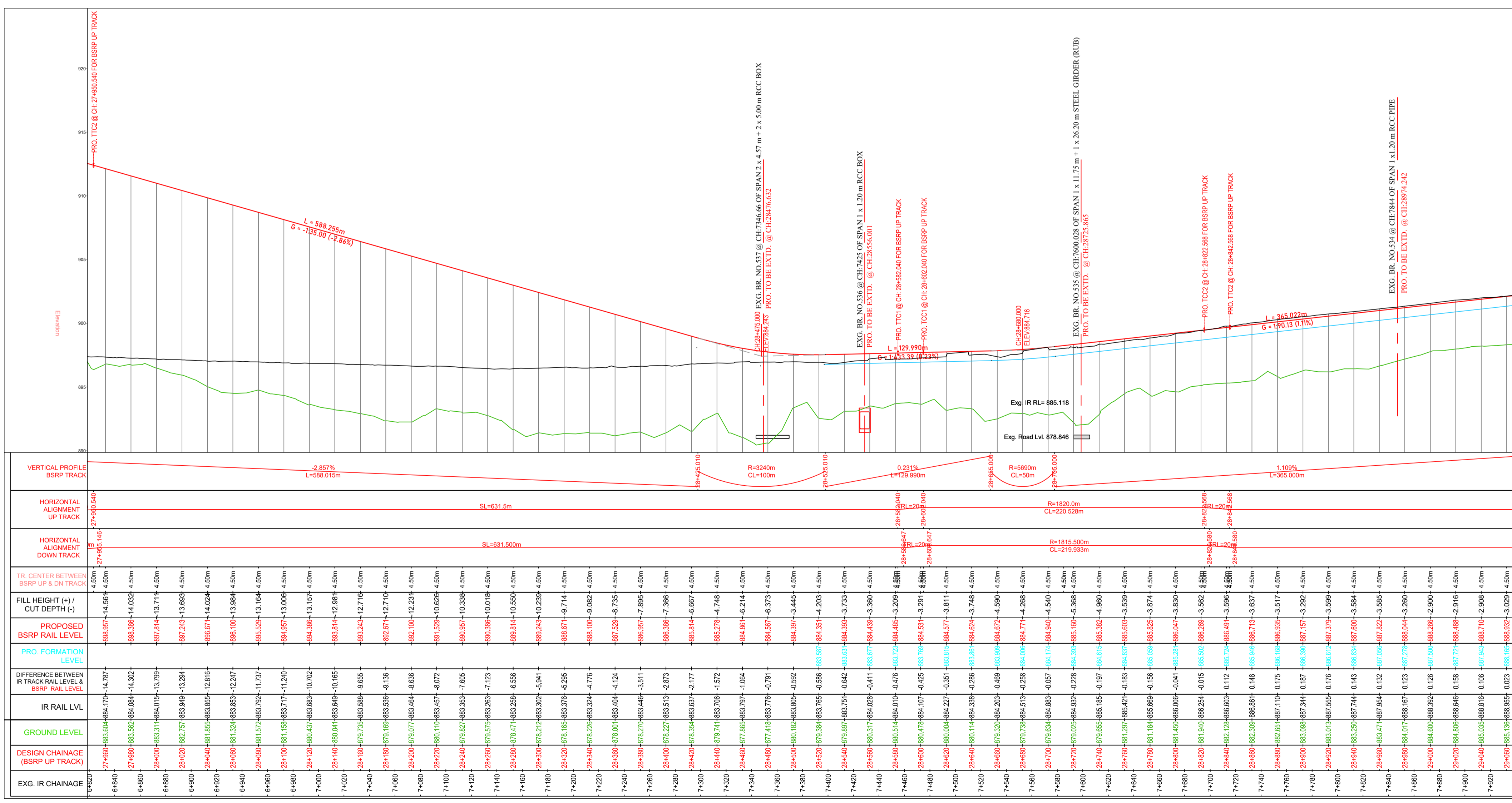
GENERAL CONSULTANTS:
egis **AECOM** WSP
EGIS-AECOM-WSP

CONTRACTOR:

DETAILED DESIGN CONSULTANT (DDC):

PROOF CONSULTANT (PC):

TITLE: ALIGNMENT PLAN & PROFILE FROM CH: 28+000 TO CH: 29+000



CH	TR CENTER BETWEEN BSRP UP & DN TRACK	FILL HEIGHT (+) / CUT DEPTH (-)	PROPOSED BSRP RAIL LEVEL	PRO FORMATION LEVEL	DIFFERENCE BETWEEN IR TRACK RAIL LEVEL & BSRP RAIL LEVEL	IR RAIL LVL	GROUND LEVEL	DESIGN CHAINAGE (BSRP UP TRACK)	EXG. IR CHAINAGE
27+900	4.50m	-886.95	886.95	886.95	-11.87	886.95	886.95	27+900	27+900
27+950	4.50m	-886.38	886.38	886.38	-14.30	886.38	886.38	27+950	27+950
28+000	4.50m	-887.81	887.81	887.81	-13.79	887.81	887.81	28+000	28+000
28+050	4.50m	-887.24	887.24	887.24	-13.84	887.24	887.24	28+050	28+050
28+100	4.50m	-886.67	886.67	886.67	-14.04	886.67	886.67	28+100	28+100
28+150	4.50m	-886.10	886.10	886.10	-13.84	886.10	886.10	28+150	28+150
28+200	4.50m	-885.53	885.53	885.53	-13.74	885.53	885.53	28+200	28+200
28+250	4.50m	-884.96	884.96	884.96	-13.64	884.96	884.96	28+250	28+250
28+300	4.50m	-884.39	884.39	884.39	-13.54	884.39	884.39	28+300	28+300
28+350	4.50m	-883.82	883.82	883.82	-13.44	883.82	883.82	28+350	28+350
28+400	4.50m	-883.25	883.25	883.25	-13.34	883.25	883.25	28+400	28+400
28+450	4.50m	-882.68	882.68	882.68	-13.24	882.68	882.68	28+450	28+450
28+500	4.50m	-882.11	882.11	882.11	-13.14	882.11	882.11	28+500	28+500
28+550	4.50m	-881.54	881.54	881.54	-13.04	881.54	881.54	28+550	28+550
28+600	4.50m	-880.97	880.97	880.97	-12.94	880.97	880.97	28+600	28+600
28+650	4.50m	-880.40	880.40	880.40	-12.84	880.40	880.40	28+650	28+650
28+700	4.50m	-879.83	879.83	879.83	-12.74	879.83	879.83	28+700	28+700
28+750	4.50m	-879.26	879.26	879.26	-12.64	879.26	879.26	28+750	28+750
28+800	4.50m	-878.69	878.69	878.69	-12.54	878.69	878.69	28+800	28+800
28+850	4.50m	-878.12	878.12	878.12	-12.44	878.12	878.12	28+850	28+850
28+900	4.50m	-877.55	877.55	877.55	-12.34	877.55	877.55	28+900	28+900
28+950	4.50m	-876.98	876.98	876.98	-12.24	876.98	876.98	28+950	28+950
29+000	4.50m	-876.41	876.41	876.41	-12.14	876.41	876.41	29+000	29+000

GENERAL CONSULTANTS

NAME	DESIGNATION	DATE	SIGN	PROJECT DIRECTOR
				SIGN
				NAME
				DATE

EMPLOYER

SIGNATURE

NAME

DESIGNATION

DATE

REVISIONS

NO.	DESCRIPTION	DATE

REVISION 0
DWG STATUS D
DATE 25.06.2026
SCALE H-1:2000, V-1:200
SIZE A1
SHEET 30 OF 47
DRG. No | 0 | 2 | 4 | 0 | 8 | 1 | - | C | - | R | L | 1 | 0 | - | P | P | 3 | 0 | 3 | 0

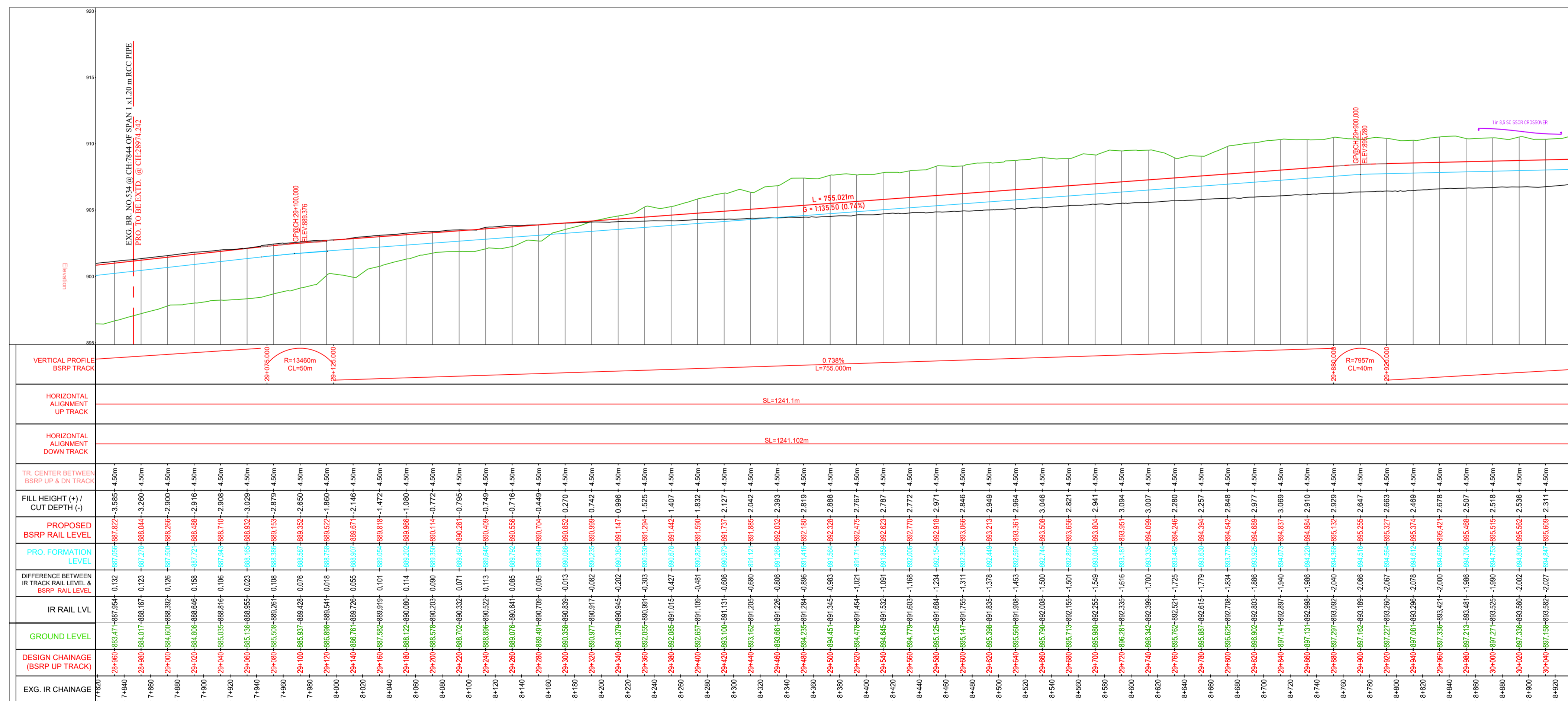
PROJECTION FIRST ANGLE

RELEASED FOR
 PRELIMINARY
 DEFINITIVE
 GOOD FOR CONSTRUCTION
 AS BUILT

HEELALIGE

RAJANKUNTE

This drawing is the property of K-RIDE and must not be passed on to any person or body not authorised by us to receive it nor be copied or otherwise made use either in full or in part by such person or body without our prior permission in writing.



- NOTES-
1. ALL DIMENSIONS ARE IN METER UNLESS OTHERWISE STATED.
 2. DRAIN / RETAINING WALL DETAILS SHALL BE SUBMITTED SEPARATELY.
 3. SCHEDULE OF DIMENSIONS FOLLOWED AS PER BSRP.
 4. P-WAY DESIGN DETAILS ARE NOT PART OF THIS PACKAGE SCOPE.
 5. THE RUB/ROB/BRIDGES/STRUCTURE SHOWN IN THE DRAWING SHALL BE REFERRED TO RESPECTIVE GAD'S FOR DETAILS.
 6. DESIGN SLOPES SHALL BE AS PER THE APPROVED DESIGN REPORT.
 7. IR DOUBLING SHOWN IN PLAN IS AS PER CLIENTS TENDER STATGE DRAWING AND NOT FINAL.

LEGEND FOR PLAN:

PROPOSED BSRP TRACK	—
FUTURE BSRP WORK	---
EXISTING IR TRACK	---
FUTURE IR WORK	---
EXISTING IR ROW	---
PROPOSED BSRP ROW (LAQ)	---

LEGEND FOR PROFILE:

PROPOSED BSRP FORMATION LEVEL	---
PROPOSED BSRP RAIL LEVEL	---
EXISTING IR RAIL LEVEL	---
GROUND LEVEL	---

ALIGNMENT NOTATIONS:

R = RADIUS	G = GRADIENT
CL = CIRCULAR CURVE LENGTH	L = GRADIENT LENGTH
TRL = TRANSITION LENGTH	TTC1 = SPIRAL TO CURVE
TTL = TANGENT LENGTH	TTC2 = CURVE TO SPIRAL
Ca = ACTUAL CANT	TTC3 = SPIRAL TO TANGENT
Cg = CANT DEFICIENT	
Cg = CANT GRADIENT	

PROJECT :
BENGALURU SUBURBAN RAILWAY PROJECT (BSRP) - CORRIDOR - 4

EMPLOYER :
 RAIL INFRASTRUCTURE DEVELOPMENT COMPANY (KARNATAKA) LIMITED

GENERAL CONSULTANTS :
 EGIS-AECOM-WSP

CONTRACTOR :

DETAILED DESIGN CONSULTANT (DDC) :

PROOF CONSULTANT (PC) :

TITLE : ALIGNMENT PLAN & PROFILE FROM CH: 29+000 TO CH: 30+000

GENERAL CONSULTANTS

NAME	DESIGNATION	DATE	SIGN	PROJECT DIRECTOR
				SIGN
				NAME
				DATE

EMPLOYER

SIGNATURE
NAME
DESIGNATION
DATE

REVISIONS

REVISION	DWG STATUS	DATE	SCALE	SIZE	SHEET	DRG. No
0	D	25.06.2026	H-1:2000, V-1:200	A1	31 OF 47	02 2 4 0 8 - C - R L 1 0 - P P 3 0 3 1

PROJECTION: FIRST ANGLE

RELEASED FOR: PRELIMINARY, DEFINITIVE, GOOD FOR CONSTRUCTION, AS BUILT

This drawing is the property of K-RIDE and must not be passed on to any person or body not authorised by us to receive it nor be copied or otherwise made use either in full or in part by such person or body without our prior permission in writing.

- NOTES-
1. ALL DIMENSIONS ARE IN METER UNLESS OTHERWISE STATED.
2. DRAIN / RETAINING WALL DETAILS SHALL BE SUBMITTED SEPARATELY.
3. SCHEDULE OF DIMENSIONS FOLLOWED AS PER BSRP.
4. P-WAY DESIGN DETAILS ARE NOT PART OF THIS PACKAGE SCOPE.
5. THE RUB/ROB/BRIDGES/STRUCTURE SHOWN IN THE DRAWING SHALL BE REFERRED TO RESPECTIVE GAD'S FOR DETAILS.
6. DESIGN SLOPES SHALL BE AS PER THE APPROVED DESIGN PLAN.
7. IR DOUBLING SHOWN IN PLAN IS AS PER CLIENTS TENDER STATGE DRAWING AND NOT FINAL.

LEGEND FOR PLAN:
PROPOSED BSRP TRACK
FUTURE BSRP WORK
EXISTING IR TRACK
FUTURE IR WORK
EXISTING IR ROW
PROPOSED BSRP ROW (LAQ)

LEGEND FOR PROFILE:
PROPOSED BSRP FORMATION LEVEL
PROPOSED BSRP RAIL LEVEL
EXISTING IR RAIL LEVEL
GROUND LEVEL

ALIGNMENT NOTATIONS:
R = RADIUS
COL = CIRCULAR CURVE LENGTH
TRL = TRANSITION LENGTH
TTL = TANGENT LENGTH
Ca = ACTUAL CANT
Cg = CANT DEFICIENT
Ct = CANT GRADIENT
G = GRADIENT
L = GRADIENT LENGTH
TTC1 = TANGENT TO SPIRAL
TTC2 = SPIRAL TO TANGENT

PROJECT:
BENGALURU SUBURBAN RAILWAY PROJECT (BSRP) - CORRIDOR - 4

EMPLOYER:
RAIL INFRASTRUCTURE DEVELOPMENT COMPANY (KARNATAKA) LIMITED

GENERAL CONSULTANTS:
EGIS AECOM WSP
CONTRACTOR:
EGIS-AECOM-WSP

DETAILED DESIGN CONSULTANT (DDC):

PROOF CONSULTANT (PC):

TITLE:
ALIGNMENT PLAN & PROFILE
FROM CH: 32+000 TO CH: 33+000

GENERAL CONSULTANTS

Table with columns: NAME, DESIGNATION, DATE, SIGN, PROJECT DIRECTOR

Table with columns: NAME, DESIGNATION, DATE

EMPLOYER

SIGNATURE

NAME

DESIGNATION

DATE

REVISIONS

Table with columns: NO, DATE, DESCRIPTION

Table with columns: REVISION, DWG STATUS, DATE, SCALE, SIZE, SHEET, DRG. No

RELEASED FOR:
PRELIMINARY
DEFINITIVE
GOOD FOR CONSTRUCTION
AS BUILT

PROJECTION:
FIRST ANGLE

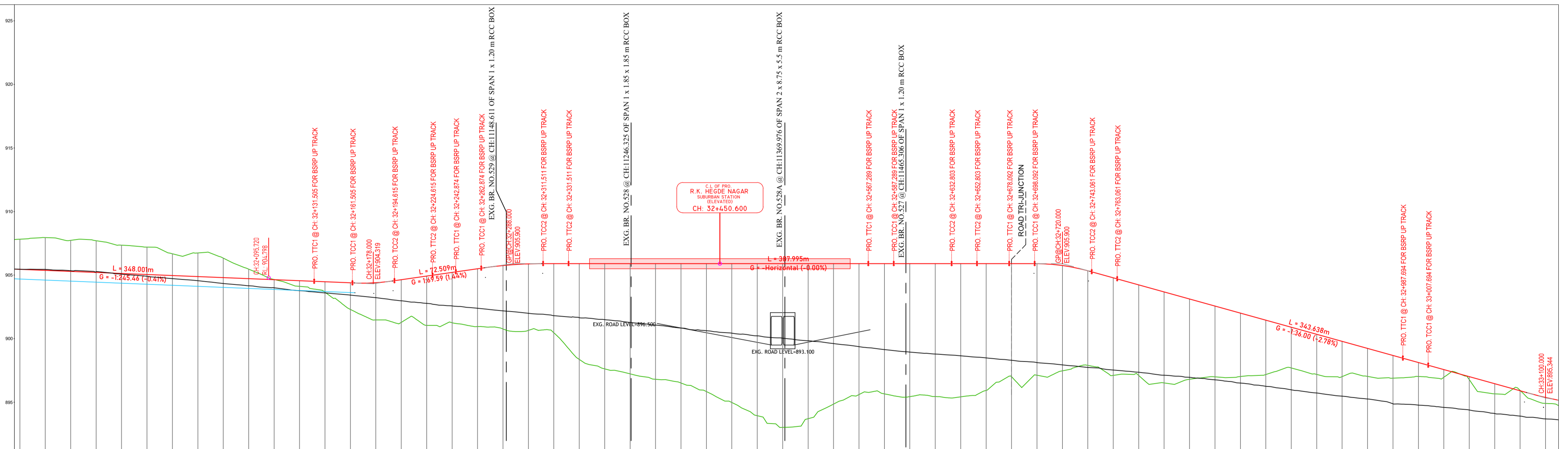
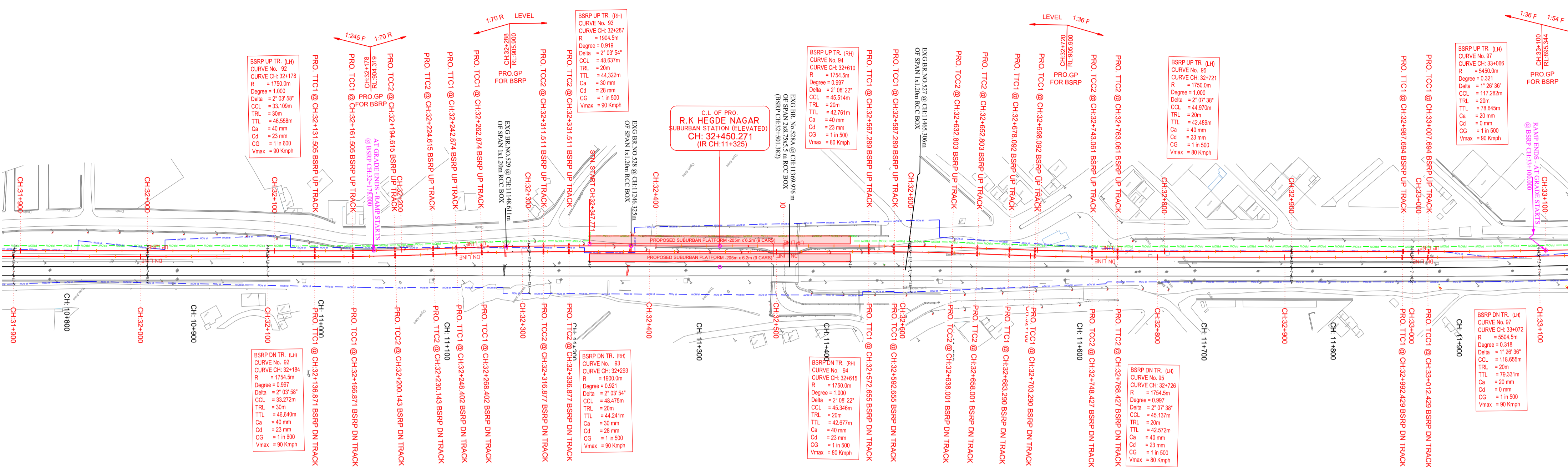


Table with columns: STATIONING, VERTICAL PROFILE BSRP TRACK, HORIZONTAL ALIGNMENT UP TRACK, HORIZONTAL ALIGNMENT DOWN TRACK, TR. CENTER BETWEEN BSRP UP & DN TRACK, FILL HEIGHT (+) / CUT DEPTH (-), PROPOSED BSRP RAIL LEVEL, PRO FORMATION LEVEL, DIFFERENCE BETWEEN IR TRACK RAIL LEVEL & BSRP RAIL LEVEL, IR RAIL LVL, GROUND LEVEL, DESIGN CHAINAGE (BSRP UP TRACK), EXG. IR CHAINAGE

Table with columns: STATIONING, VERTICAL PROFILE BSRP TRACK, HORIZONTAL ALIGNMENT UP TRACK, HORIZONTAL ALIGNMENT DOWN TRACK, TR. CENTER BETWEEN BSRP UP & DN TRACK, FILL HEIGHT (+) / CUT DEPTH (-), PROPOSED BSRP RAIL LEVEL, PRO FORMATION LEVEL, DIFFERENCE BETWEEN IR TRACK RAIL LEVEL & BSRP RAIL LEVEL, IR RAIL LVL, GROUND LEVEL, DESIGN CHAINAGE (BSRP UP TRACK), EXG. IR CHAINAGE

This drawing is the property of K-RIDE and must not be passed on to any person or body not authorised by us to receive it nor be copied or otherwise made use either in full or in part by such person or body without our prior permission in writing.

- NOTES:
1. ALL DIMENSIONS ARE IN METER UNLESS OTHERWISE STATED.
2. DRAIN / RETAINING WALL DETAILS SHALL BE SUBMITTED SEPARATELY.
3. SCHEDULE OF DIMENSIONS FOLLOWED AS PER BSPP.
4. P-WAY DESIGN DETAILS ARE NOT PART OF THIS PACKAGE SCOPE.
5. THE RUB/ROB/BRIDGES/STRUCTURE SHOWN IN THE DRAWING SHALL BE REFERRED TO RESPECTIVE GAD'S FOR DETAILS.
6. DESIGN SLOPES SHALL BE AS PER THE APPROVED DESIGN REPORT.
7. IR DOUBLING SHOWN IN PLAN IS AS PER CLIENTS TENDER STATGE DRAWING AND NOT FINAL.

LEGEND FOR PLAN:
PROPOSED BSPP TRACK
FUTURE BSPP WORK
EXISTING IR TRACK
FUTURE IR WORK
EXISTING IR ROW
PROPOSED BSPP ROW (LAQ)

LEGEND FOR PROFILE:
PROPOSED BSPP FORMATION LEVEL
PROPOSED BSPP RAIL LEVEL
EXISTING IR RAIL LEVEL
GROUND LEVEL

ALIGNMENT NOTATIONS:
R = RADIUS
CCL = CIRCULAR CURVE LENGTH
TRL = TRANSITION LENGTH
TTL = TANGENT LENGTH
Ca = ACTUAL CANT
Cd = CANT DEFICIENT
Cg = CANT GRADIENT
G = GRADIENT
L = GRADIENT LENGTH
TTC1 = TANGENT TO SPIRAL
TTC2 = SPIRAL TO TANGENT

PROJECT:
BENGALURU SUBURBAN RAILWAY PROJECT (BSPP) - CORRIDOR - 4

EMPLOYER:
RAIL INFRASTRUCTURE DEVELOPMENT COMPANY (KARNATAKA) LIMITED

GENERAL CONSULTANTS:
egis AECOM WSP
EGIS-AECOM-WSP

CONTRACTOR:
DETAILED DESIGN CONSULTANT (DDC):

PROOF CONSULTANT (PC):

TITLE:
ALIGNMENT PLAN & PROFILE FROM CH: 33+000 TO CH: 34+000

GENERAL CONSULTANTS
NAME DESIGNATION DATE SIGN PROJECT DIRECTOR
SIGN
NAME
DATE

EMPLOYER
SIGNATURE
NAME
DESIGNATION
DATE

REVISIONS
REVISION DWG STATUS DATE SCALE SIZE SHEET

PROJECTION
RELEASED FOR
PRELIMINARY
DEFINITIVE
CONSTRUCTION
AS BUILT

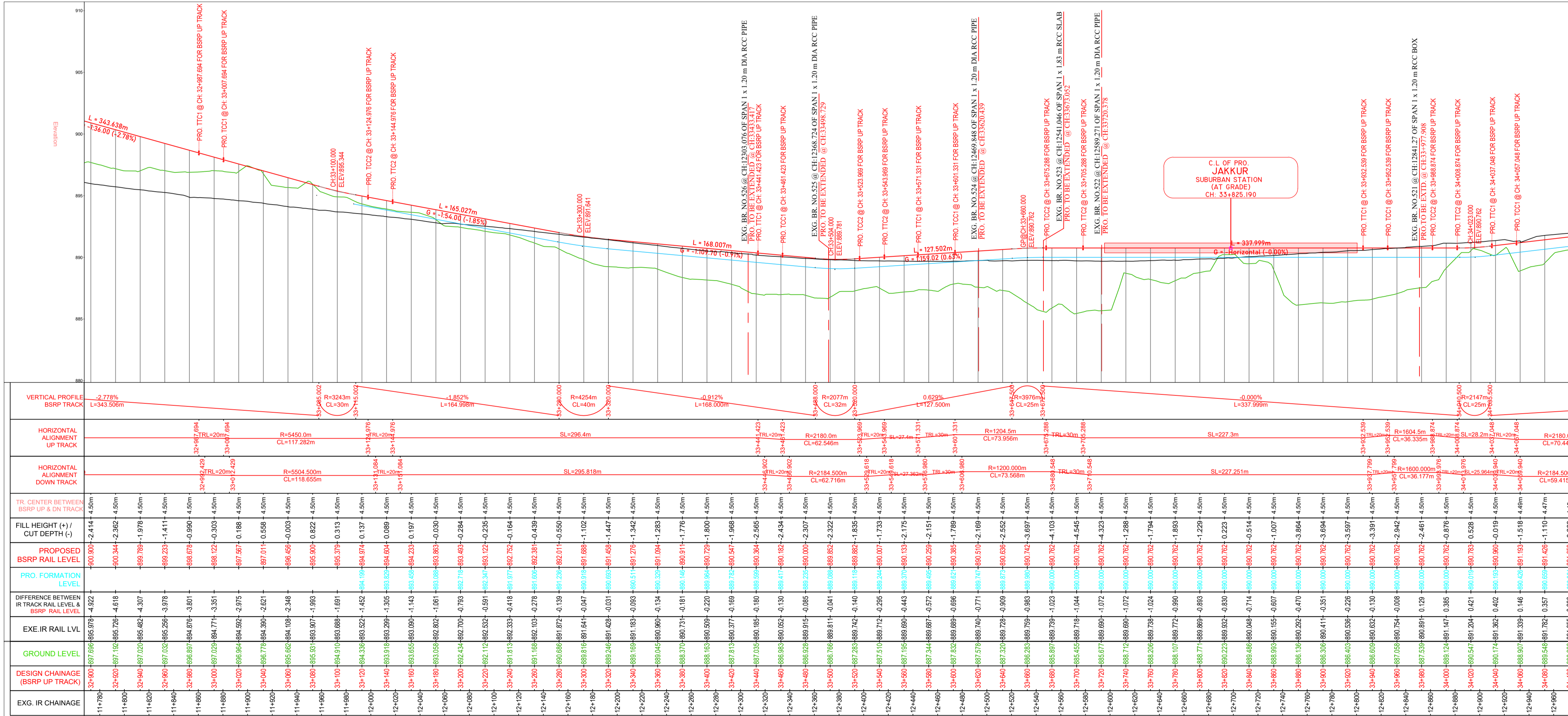
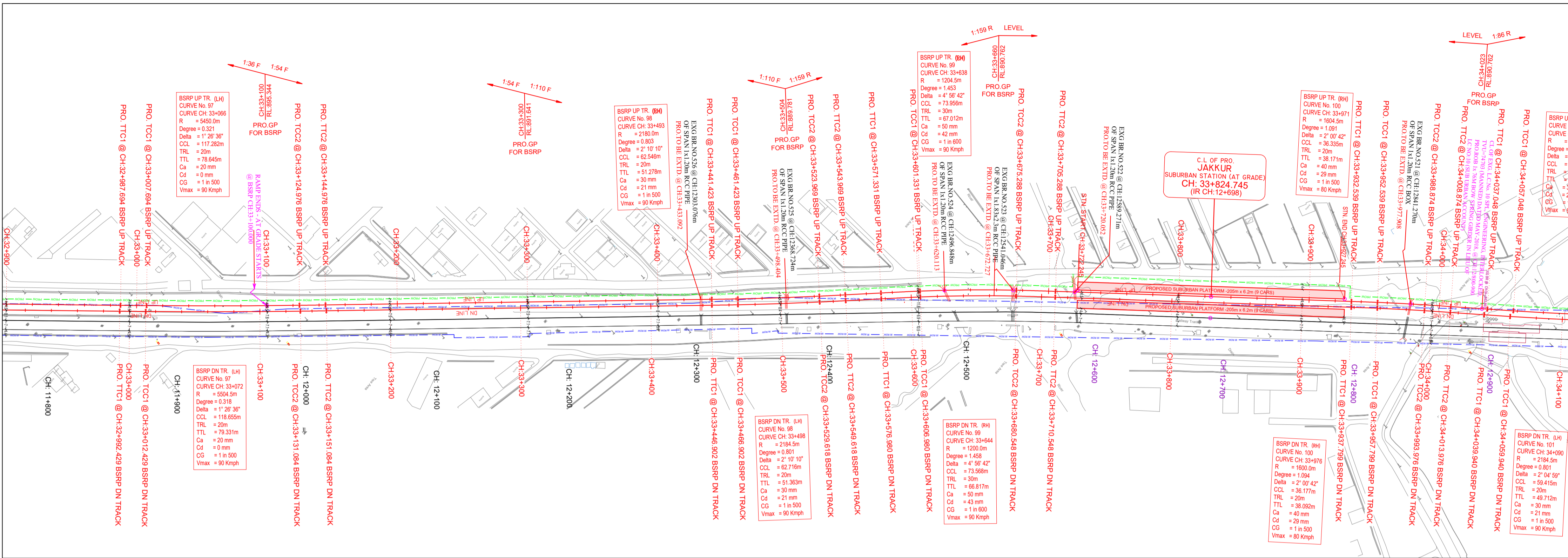


Table with 10 columns: EXG. IR CHAINAGE, GROUND LEVEL, DESIGN CHAINAGE (BSPP UP TRACK), DIFFERENCE BETWEEN IR TRACK RAIL LEVEL & BSPP RAIL LEVEL, PROPOSED BSPP RAIL LEVEL, FILL HEIGHT (+) / CUT DEPTH (-), TRACK CENTER BETWEEN BSPP UP & DN TRACK, HORIZONTAL ALIGNMENT DOWN TRACK, HORIZONTAL ALIGNMENT UP TRACK, VERTICAL PROFILE BSPP TRACK.